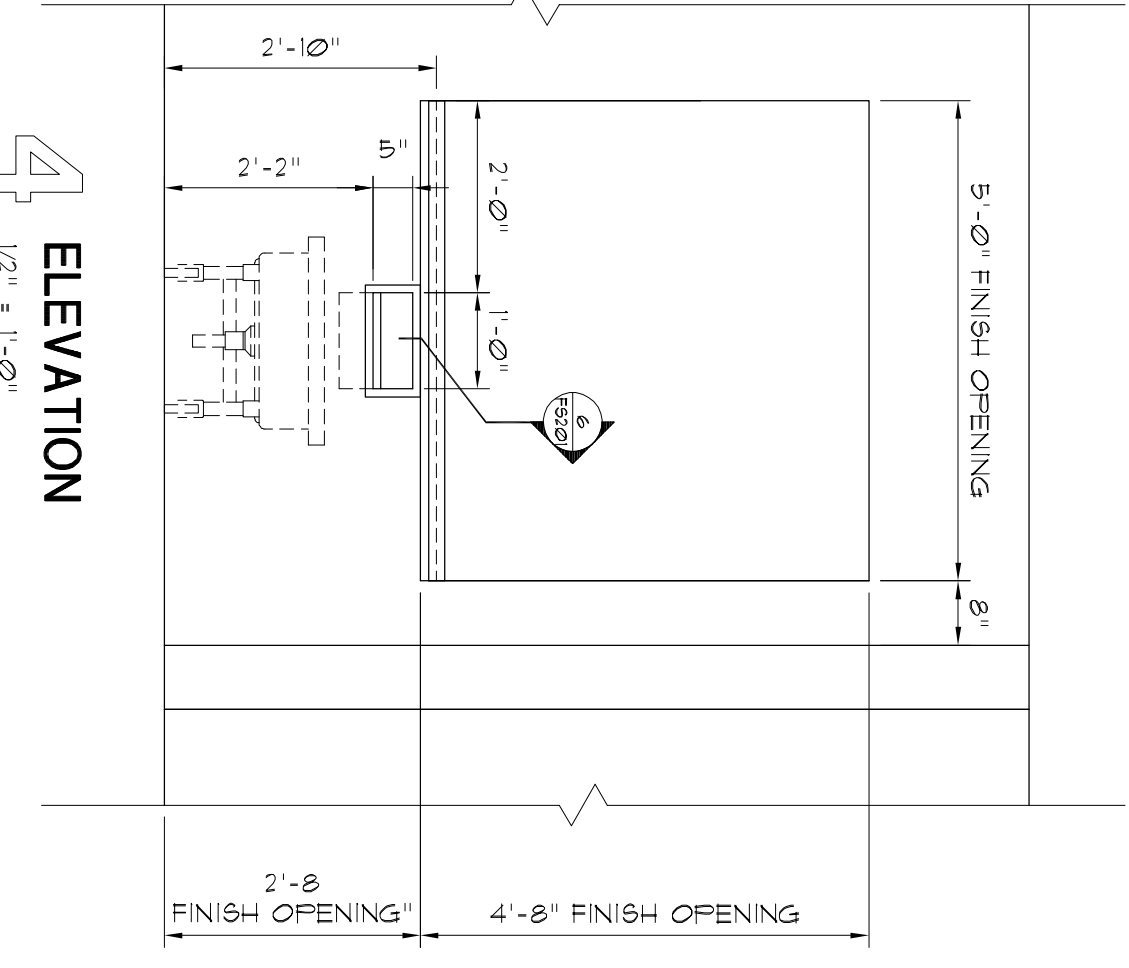


1

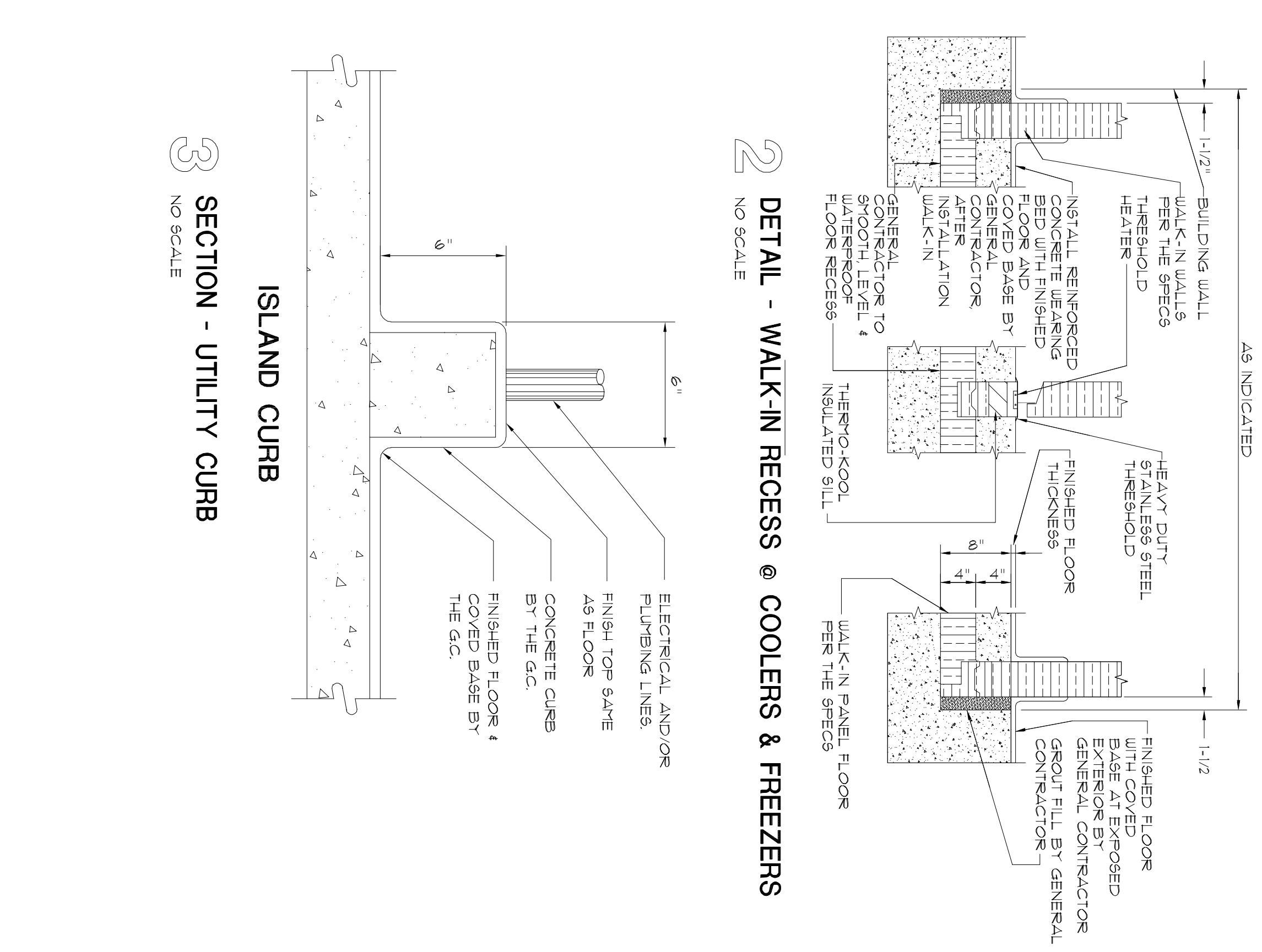
FOODSERVICE EQUIPMENT SPECIAL CONDITIONS PLAN
1/4" = 1'-0"

GENERAL NOTES

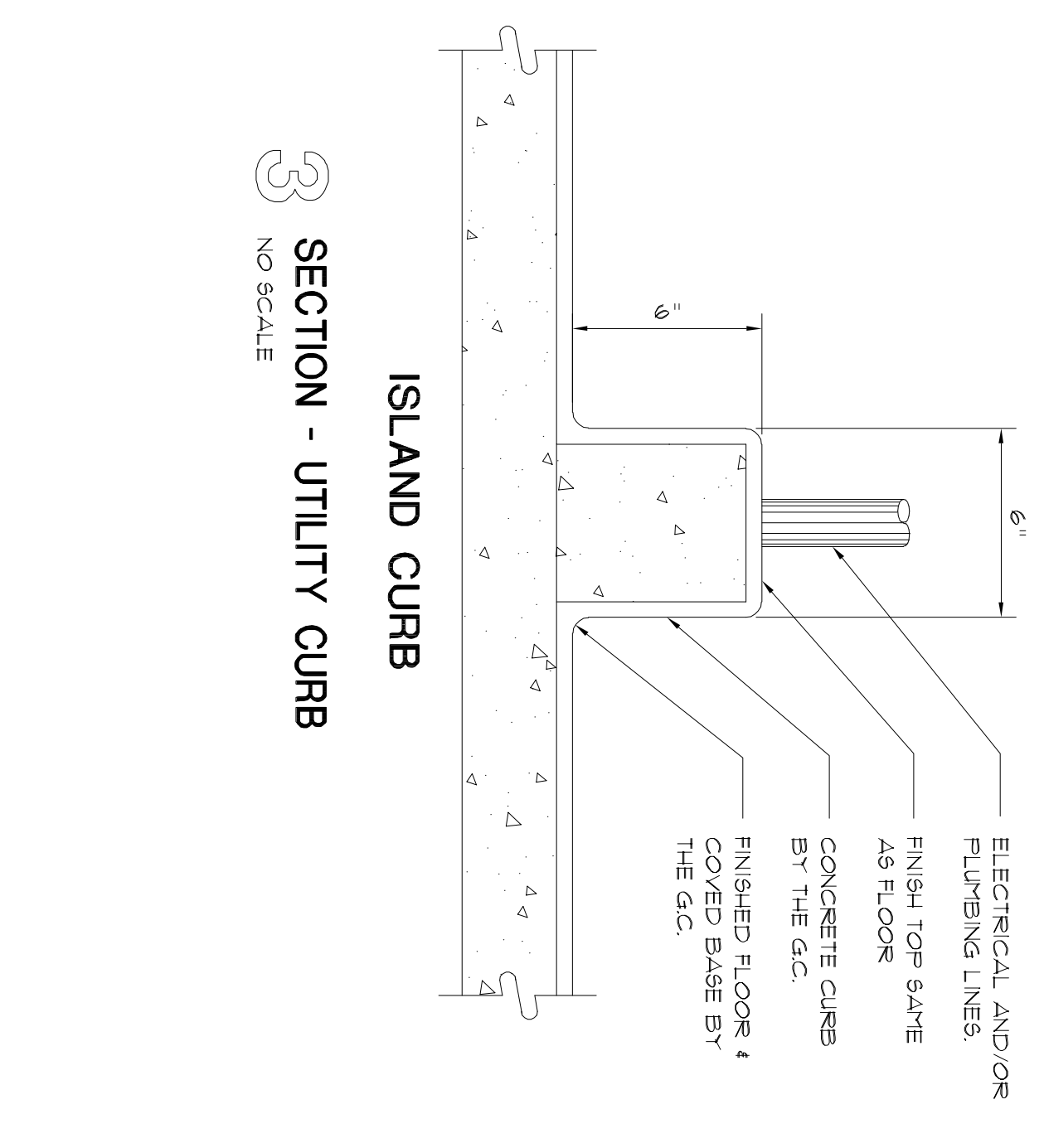
1. THE FOODSERVICE CONTRACTOR MUST COORDINATE AND VERIFY ALL DIMENSIONS WITH THE FOODSERVICE EQUIPMENT SHOP DRAWINGS AND THE PURPOSER ONLY.
2. THE GENERAL CONTRACTOR TO PROVIDE AND INSTALL 3/4" THICK WOOD BACKING IN THE WALL FOR THE MOUNTING OF THE EQUIPMENT FURNISHED BY THE FOODSERVICE CONTRACTOR. THE FOODSERVICE CONTRACTOR TO FURNISH EXACT DIMENSIONED LOCATIONS.
3. THE WALK-IN DOORS MUST BE LEFT OPEN UNTIL THE INTERIOR CONCRETE WALK-IN FLOOR CURES. FAILURE TO DO SO MAY DAMAGE THE INTERIOR OF THE WALK-IN REQUIRING THE UNIT TO BE REPLACED.



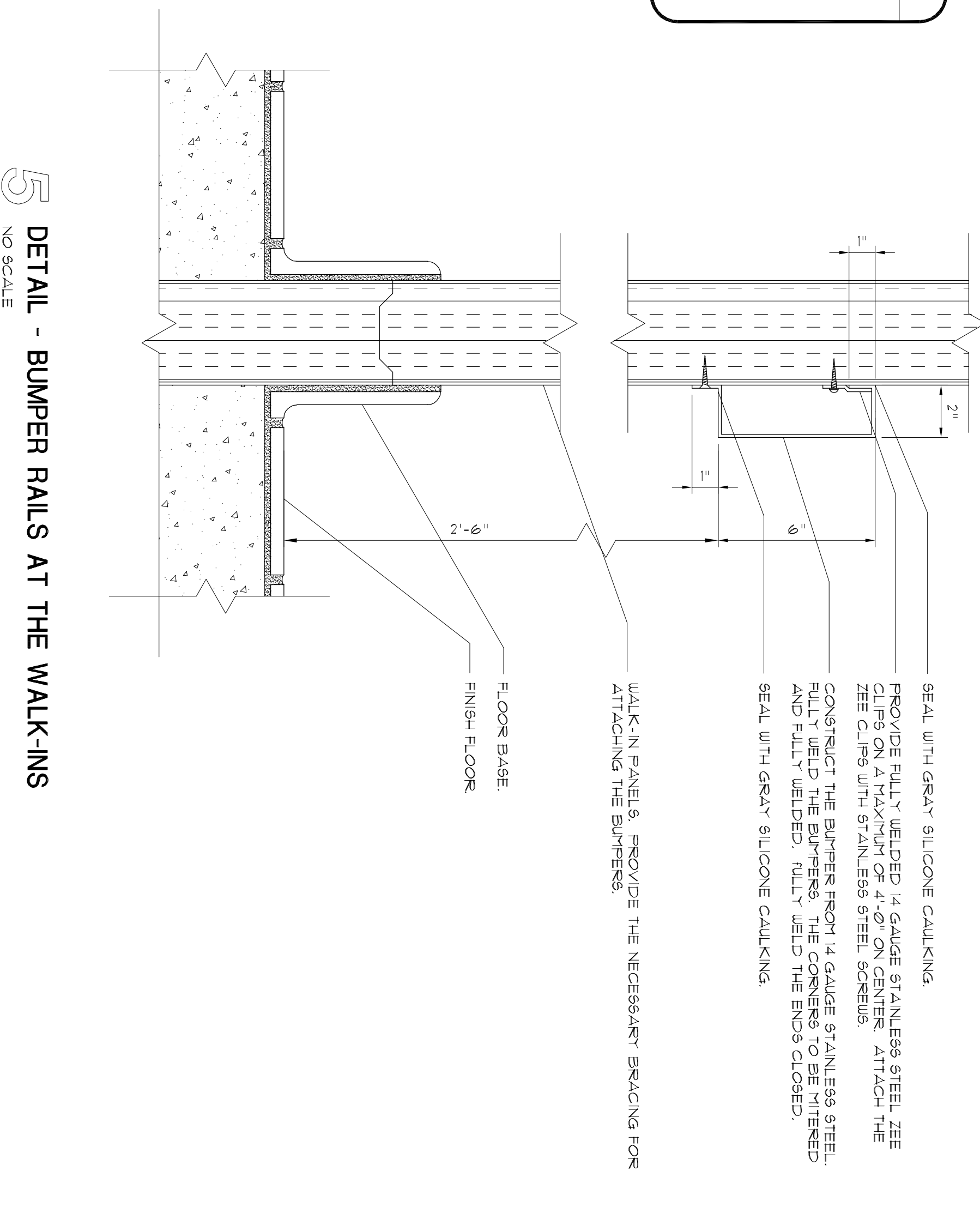
ELEVATION
1/2" = 1'-0"



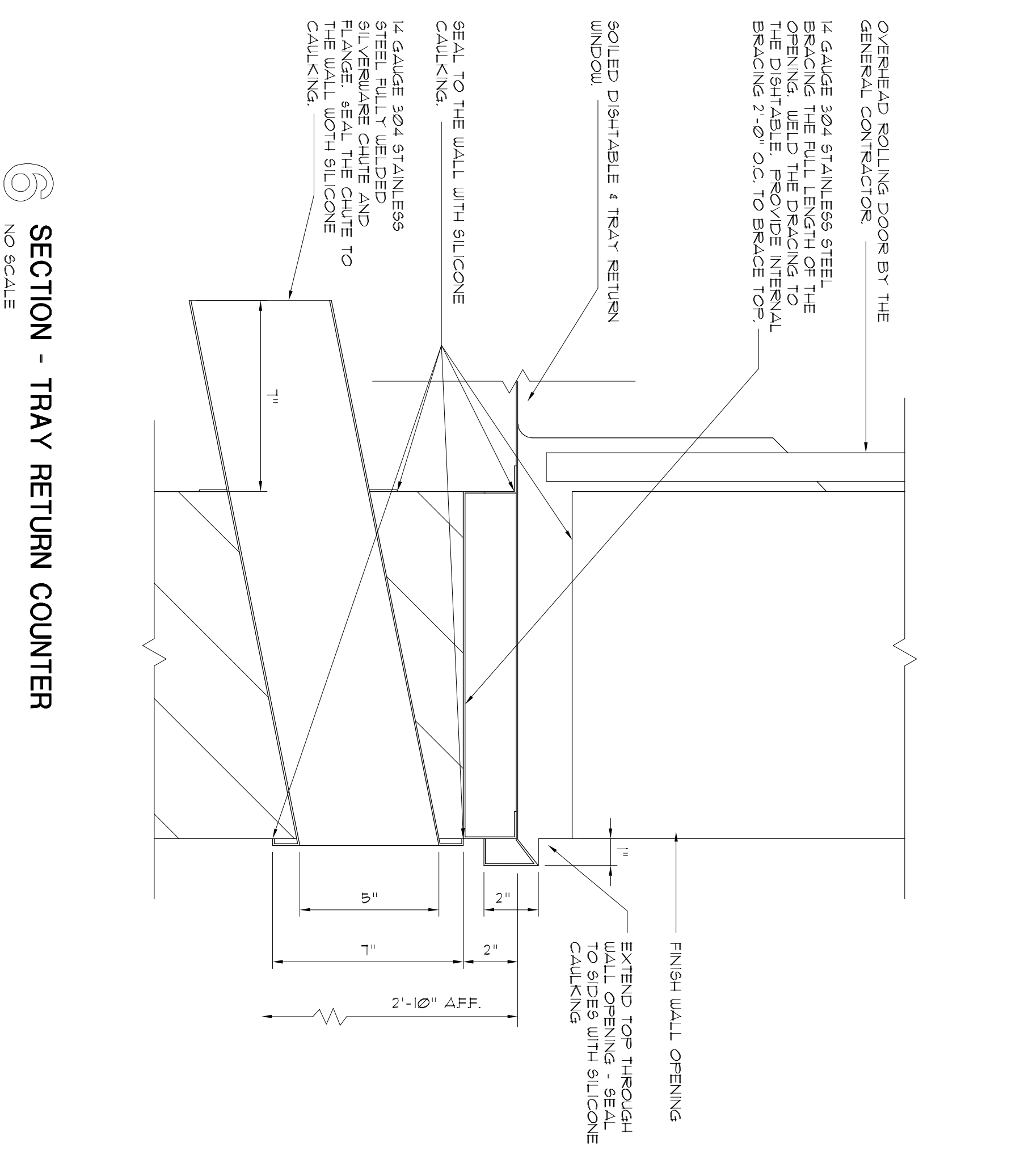
2 DETAIL - WALK-IN RECESS @ COOLERS & FREEZERS
NO SCALE



3 SECTION - UTILITY CURB
NO SCALE



4 DETAIL - BUMPER RAILS AT THE WALK-INS
NO SCALE



6 SECTION - TRAY RETURN COUNTER
NO SCALE

ACGP
the Abila Griffin
Partnership L.L.C.
313 S. E. 5th Street
MOORE, OK. 73160
405.735.3477
ACGP@theACGP.net
www.theACGP.net

CEDAR CREEK
OHL
KFC ENGINEERING
STRUCTURAL
SALUS O'BRIEN
MECHANICAL/ELECTRICAL

RS
drawn by
RS
checked by
10/29/2024
dlb

revisions
Addendum #1 11/20/2024

MOORE
PUBLIC SCHOOLS

CHILD CARE FACILITY
201 N. EASTERN AVE.

Sheet No:
FSS201

OWNERSHIP USE OF DOCUMENTS:
ACG EXPRESSLY RESERVES ITS
COPYRIGHT AND OTHER PROPERTY
RIGHTS OF ALL PLANS AND DRAWINGS
DESIGNED AND/OR PRODUCED. PLANS
AND DRAWINGS ARE NOT TO BE
REPRODUCED IN ANY FORM OR MANNER
WITHOUT THE EXPRESSED WRITTEN
CONSENT OF ACP.